

Krishna Copper PVT. LTD.

CHANGE | ADAPT | GROW



"KRISCOP"

Recognized Brand for Copper, Brass & Copper Alloys
(Since: 2008)

An ISO 9001:2015 Certified Company

Copper

Brass

Bronze

**Other
Copper
Alloys**

PLATES

ROD ROUNDS

SHEETS

WIRES

FOILS

SECTIONS

FLAT BARS

TRAPEZOID

STRIPS

PARTS

ROTOR BARS

COMPONENTS

SLABS

SHAPES

NUGGETS

ANODES

BALLS

INGOTS

PROFILES

MASTER ALLOYS

Dear Customer,

"You are our most valuable asset!"

It is precisely because you have a choice of suppliers that we strive for excellence to ensure that you return to us without hesitation and with increasing enthusiasm.

We aspire to always be the reliable supplier and trusted partner who provides you with quality products and quality service. Moreover, we strive to be a key contributor to your innovations - whilst never ceasing to innovate ourselves. Count on us!

Mohanlal Jain
(Chairman)
Krishna Copper Pvt. Ltd.



KRISCOP is the partner of choice to customer's who use advanced functional materials. Technology & material continues to strengthen its value-adding role along the entire energy chain, from generation to distribution to consumption.

Our strength in India is rooted in the strategic partnerships KRISCOP has with top global suppliers of equipment to the Power Generation, Transmission, Storage, Distribution And Consumption industries. On this basis, we focus on high value-added solutions and joint product development projects that translate into competitive advantages for our customers. It is my firm belief that customer proximity is key to being successful in this endeavor.

Mahendra Sanghvi
(Director)
Krishna Copper Pvt. Ltd.



WHY KRISHNA COPPER

- **HUMAN COMPANY :-**

We value each individual contribution to our success and we motivate people by means of integrity, ethics and constant support to personal development.

- **TEAM WORK:-**

Work as a team, we gather the best of the knowledge, intelligence and ability to constantly improve the work and benefit our customers.

- **EFFICIENCY :-**

Every day we work to make things better all products, process and developments are driven by the increase in efficiency.

- **FLEXIBILITY:-**

We will always develop new efficient manners to respond to situations of change and meet the customer needs.

- **INNOVATION :-**

New ideas and technologies ensure the existence of the company. Therefore, we encourage and support an atmosphere favorable to think ahead of our time.

- **LEADERSHIP :-**

Be a reference in the relationship with customers.

OUR VISION

“To be the most preferred choice of global stakeholders”

OUR MISSION

**“To be the leading player in global markets with fully satisfied stakeholders
Maintaining cost & effectiveness through innovative technology and optimum
utilization of talent & resources”**

VALUES

- Spirit Of Accomplishment
- Appropriate Attitude
- Never Dying Passion For Excellence

- Dynamic
- Honest
- Accountable

Profile

Established in the year 2008, Krishna Group, is engaged in varying fields and has a strong foothold under the able guidance of our CEO Mr. Mohanlal Jain (Chairman). His industry experience and knowledge has enabled us to grow vertically and Horizontally and garner a vast client base across the globe.

Infrastructure:

Krishna Copper have own Manufacturing Facilities & state-of-the-art infrastructure unit sprawls across a **area of 3610 square meter**. It has an **installed capacity 300 tons per Month (One Shift)** & is designed as per the latest technology. The advanced production process involves the stringent hard work of our engineers and the enhanced working of the machines.



List of Machines :

Extrusions Press	Bending & Punching Machine
Foil & Strip Rolling Mill 2-Hi / 4-Hi / 6-Hi	Straightening & Flattening Machine
Furnace: Induction & Furnace Oil Based	Mechanical Shearing Machine
Rod & Wire Drawing Machine	Grinding & Polishing Machine
Cold Drawing Flat & Strip Machines	Cold Forging
Vacuum Annealing Furnace	Slitting Machine
CNC for Making Components	Sections / Profiles Rolling Machine
Plate / Sheet Rolling Mill	Balls Making Machine
Heavy Draw Bench for Flats Drawing of 200 mm to 450 mm wide	



CHANGE | ADAPT | GROW



Krishna Copper PVT. LTD.

Mfg. Of Copper, Brass & Copper Alloys:
Wires, Strip, Foils, Rods, Flats, Sections, Profiles,
Sheets, Plates, Balls, Anodes etc.

"KRISCOP"

Recognized Brand for Copper, Brass & Copper Alloys
(Since: 2008)
An ISO 9001:2015 Certified Company

Quality Policy & Quality Objectives

- Supplying consistent quality products to customers
 - On time delivery of products to customers
- Meeting the needs and expectations of interested parties
- Complying with applicable regulatory / statutory requirements
- Achieving continual improvement in products and processes

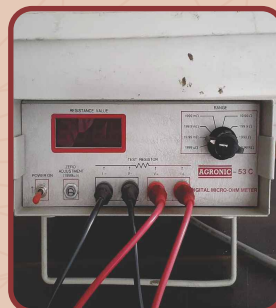
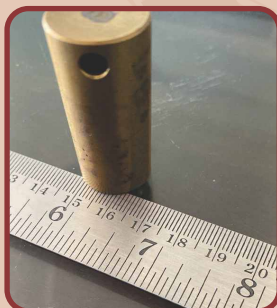
Quality & Testing Facility:

Our products are in line with the Indian and International standards, and are accordingly manufactured as per customers requirement's.

High quality Copper & Copper Alloys available in the form of Strips, Rods, Wires, Flats, Profile Sections, Squares, Sheets, Plates, Foils, Conductors, Balls, Anodes and Ingot are tested on the following parameters:

Testing Equipments & Facilities :

Hardness: FIE (India)	Resistivity Test (Agronics / Prestige)
Tensile / Elongation / Yield Strength: K. M. I. (India)	Straightness / Flatness Table (Alfa - India)
Electrical Conductivity: Technofour (Pune, India)	Cambers (Crossbow) (Sickle Bay)
Spectro: Spectro Analytical Lab (Germany)	Micrometers (Insize / Mitutoyo / Yamaha)
Surface and Radius (Edges) Check	Verniers (Insize / Mitutoyo)
Measure Tapes	Oxygen Analyzer: (LECO)
Ammonia Corrosion Test (Seasons Cracking Test)	Plating Thickness Check (Insize)
Lay Ratio	Right Angle



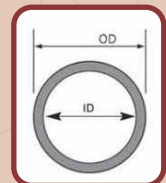
COPPER / BRASS / COPPER ALLOYS STRIPS

Sizes :

- Width 3 mm to 400 mm
- Thickness 0.2 mm to 6 mm

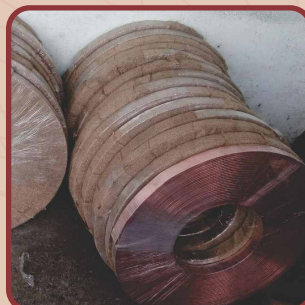
Descriptions :

- ETP Grade Copper
- Oxygen Free Copper
- DHP / DLP Grade Copper
- Brass (CuZn) Flats (60/40) (63/37) (64/36) (65/35)
(67/33) (70/30) (80/20) (85/15) (90/10) (95/5)
- Silver Bearing Copper (CuAg)
- Copper Tin (CuSn) (Phosphorous Bronze)
- Copper Nickel Silicon (CuNiSi)
- Copper Magnesium Silver (CuMgAg)
- Made to order more than 36 Special Alloys - Copper & Brass based Alloys
CuAl, CuAlFe, CuNi, CdCu, TeCu, Alu-Brass, Chromium Copper (CuCr), Chromium
Zirconium Copper (CuCrZr), Iron Bearing Copper, Nickel Silver (CuNiZn) & many more.
- Corners (Edges) : Square, Radius & Full Radius Edge
- We can also give TAPER shape strips
- We can maintain Inner Diameter & Outer Diameter of coils as per Customer's requirements
- Further this strips could be processed with Tin / Silver / Nickel Coating on them



Application Areas :

Chillers	Heat Exchanger and Condensers	Power Plants Refineries
Ship Building and Ship Repairs	Defense	Gas Hydro Power Projects
Earthing	Metal Punching & Fabrications	Others



COPPER / BRASS / COPPER ALLOYS - FLATS, SQUARES, RODS AND PROFILES (SECTIONS)

Sizes :

- Width : 5mm to 400mm
- Thickness : 3mm to 100mm
- Squares, Triangle, Hexagon, Octagon, Trapezoid and any SHAPES like D, V, C, A, T, I, H etc. or any components as per Customers Drawings.



COPPER



COPPER



Descriptions :

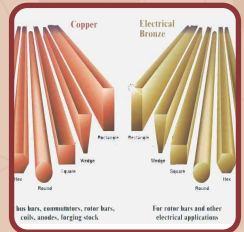
- ETP Grade Copper
- Oxygen Free Copper
- DHP / DLP Grade Copper
- Brass (CuZn) (60/40) (63/37) (64/36) (65/35) (67/33) (70/30) (80/20) (85/15) (90/10) (95/5)
- Silver Bearing Copper (CuAg)
(For Commutators / Motors / Electrical Components)
- Copper Tin (CuSn) (Phosphorous Bronze)
- Zirconium Copper Bars (CuZr)-(For Rotor Bars)



BRASS



PLATED COPPER

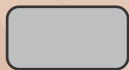


- Made to order more than 36 Special Alloys-Copper, Brass, Bronze & Alloys:
CuAl, CuAlFe, CuNi, CuNiSi, CdCu, TeCu, Alu-Brass, Chromium Copper (CuCr), Chromium Zirconium Copper (CuCrZr), Iron Bearing Copper, Lead Brass (Free Cutting), Aluminium Bronze, Manganese Bronze & many more

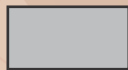
- Corners (Edges) : Square, Radius & Full Radius Edge
- We can also give TAPER / TRAPEZOID shape flats
- Further this all could be processed with Tin / Silver / Nickel Coating on them



Round
(Rods)



Rectangular Flat
(Radius Corner)



Rectangular Flat
(Sharp Corner)



Square



Hexagon



Rectangular Flat
(Full Round / Capsule Edge)



Trapezoidal
(Taper)

Application Areas :

Bus Bars	Transformers / Generators	Power Transmission Equipment
Control Panels & Switch Gears	Rotor Bars Motors	Submersible Pumps
Earthing	Electrical Components	Others

CHANGE | ADAPT | GROW



KRISCOP

Krishna Copper PVT. LTD.

Mfg. Of Copper, Brass & Copper Alloys:
Wires, Strip, Foils, Rods, Flats, Sections, Profiles,
Sheets, Plates, Balls, Anodes etc.

"KRISCOP"

Recognized Brand for Copper, Brass & Copper Alloys
(Since: 2008)
An ISO 9001:2015 Certified Company

COPPER, BRASS, BRONZE AND COPPER ALLOYS - FOILS

Sizes :

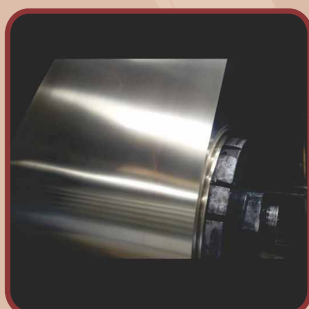
- Width : 3 mm to 400 mm
- Thickness : 0.040 mm to 5 mm

★ Depend on Width Special sizes can be made on request.



Descriptions :

- ETP Grade Copper
- DHP Grade Copper
- Oxygen Free Copper
- Copper Tin (CuSn) (Phosphorous Bronze)
- Silver Bearing Copper (CuAg)
- Brass (All Grades) (CuZn)
- Cadmium Copper (CuCd)
- Nickel Silver (CuZnNi)
- Iron Bearing Copper (CuFe)
- Copper Nickel (CuNi)
- Magnesium Copper (CuMg)
- Copper Nickel Silicon (CuNiSi)
- Copper Chromium (CuCr)



- Further this Foils could be processed with Tin Coating on them

Application Areas :

Heat Exchangers / Coolers	Flexible Bus Bars (Jumpers)	PCB's
Switchgear Industry	Cables Industries: XLPE Cables	Electrical Components
Radiators (Tin Bearing Copper/ Other Hard Copper)		Electrical Relays
Transformers (Special Round Corners for Dry Transformers)		Electrical Switches & Sockets
Sheet Metal Punching, Pressing & Stamping	Locks & Keys	Fins

COPPER & BRASS - WIRES & CONDUCTORS

Copper & Brass Rods are Cold Drawn to Manufacture Wires :

- **Wire Sizes: 8mm to 42 swg.**
- **Conductors Sizes: 10 sq. mm to 300 sq. mm**



Descriptions :

- **ETP Grade Copper Wire**
- **Oxygen Free Copper Wire**
- **DHP Grade Copper Wire**
- **Braided Copper Wire**
- **Stranded Copper Wire (Single / Multi Strand)**
- **Flat Tin Plated Wires used in Solar Panels**
- **Brass Wires**
- **Other Copper Alloys Wires**




Sectional Area	Single Strand Dia(mm)	Strands Nos.	Outer Dia. (mm)	Weight (Kg/m)	Resistance (Ω)
10	1.40	7	4.2	0.085664	≤1.649
16	1.70	7	5.1	0.126311	≤1.150
25	2.15	7	6.4	0.192743	≤0.753
30	2.30	7	6.9	0.231205	≤0.618
35	2.52	7	7.6	0.273163	≤0.514
50	1.80	19	9.0	0.384864	≤0.380
70	2.10	19	10.5	0.523162	≤0.279
95	2.50	19	12.5	0.741443	≤0.197
120	2.80	19	14.2	0.940066	≤0.157
150	2.30	37	16.0	1.018789	≤0.126
185	2.50	37	17.7	1.443863	≤0.102
240	2.80	37	20.0	1.811181	≤0.065
300	3.20	37	22.5	2.365624	≤0.052

- Copper Wires could be further Bunched, Stranded and Braided - as per the cross section area or Sq. mm & customers specifications & requirements.
- Brass Wires for EDM Machines - made as per customers specifications & requirements.
- Further this wires could be processed with Tin / Silver / Nickel Coating on them
- Could be made available in spools as per customer's requirements



Application Areas :

Winding Wire	Electrical Components
Telecommunication	Railways
Transformers & Cables	Braiding etc.
Rivets & Screws	Electro Plating
Earthing	EDM Spark Machines

COPPER, BRASS & COPPER ALLOYS - SHEETS / PLATES

Sizes :

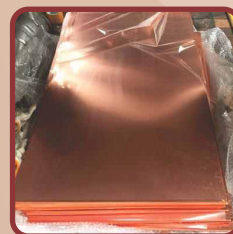
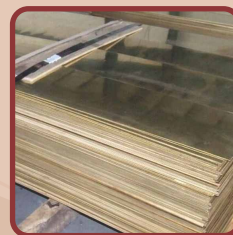
- Width : From 100 mm up to 2500 mm
- Length : From 100 mm up to 2500 mm
- Thickness : From 0.3 mm and above

Descriptions :

- ETP Grade Copper Sheet / Plate
- Oxygen Free Copper Sheet / Plate
- DHP / DLP / DOW Grade Copper Sheet / Plate
- Brass Sheet / Plate
- Copper Alloys Sheet / Plate

- Fabricated Sheets / Plates / Circles
- Specialised Bending / Cutting / Punching
- Coin Blanks & Circles
- Rings / Discs / Washers / Vickers

● Further this Plates / Sheets / Components could be processed with Tin Coating on them



Application Areas :

Pressure Vessels	Heat Exchangers
Hydraulic Bushings	Industrial Controls
Pumps	Engraving Plates
Electric Power Generation	Steam Condensers
Wear Parts for Expansion Joints	Offshore Platform Sheathing
Plastic Injection Molds and Dies	Shipbuilding
Roofing	Ornamental Work
Flashing, Chimney Caps	Earthing
Temples Roofing	Vastu Pyramids
Decorative & Interiors	Distillery Plant



"KRISCOP"

Recognized Brand for Copper, Brass & Copper Alloys
(Since: 2008)
An ISO 9001:2015 Certified Company

COPPER FOR PLATING ANODIZING

We provide these in different shapes such as :

- **Anodes**
- **Balls**
- **Nuggets**
- **Wires / Dhruvets / Granules**

Descriptions :

- **ANODES : Copper Phosphorised / Oxygen Free**
(Rectangular or Oval Shaped)

(Sizes: Width 4" / 5" / 6" / 8" & Thickness (MM) 10 / 12 / 16 / 20 / 25 / 50)

100% Assured
Quality Substitute for
U.S. / Malaysia / Japan

- **BALLS : Copper Phosphorised / Oxygen Free**
(Sizes: Diameter 1" / 2" / Mix 2mm to 10 mm)

Proudly
Made in India

- **NUGGETS : Copper Phosphorised / Oxygen Free**
(Sizes: Diameter (MM) 12 / 20 / 25 / 40 / 50 & Length 1" / 2")

★ **Sizes** : As per customer's requirements can be made



Application Areas :

Decorative	Cylinder Rotogravure	PCB's
Electrical Ground Rod	Electroforming And Many Other Functional Plating Applications.	

COPPER FLEXIBLE & BRAIDED - BUSBAR / STRIPS / JUMPERS / ROPES / CONNECTORS

- Sizes as per Customer's Drawings / Diagram

Descriptions :

- **Copper Laminated Foils - Flats / Flexible Jumpers & Connectors**
(Made from Foils)
- **Copper Flexible Flat Busbar (Made from Wires)**
- **Flexible Copper Braided Strips (Made from Wires)**
- **Flexible Braided Copper Ropes (Made from Wires)**
- Terminals can be arranged as per customer's requirements
- Further this all could be processed with Tin Coating on them

Application Areas :

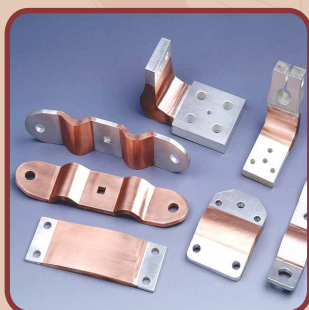
Switchgear Industries	Power Plants
Caustic Soda	Modular Cell
Membrane Cell	Diaphragm Cell
Hydrochloride Cell	Bus Ducts
Transformer	V.C.B.
Electric Locomotives	Galvano Engineering
Furnaces Etc	Resistance Welding Engineering
Chlorine Plant using Mercury Cell	
Manganese Dioxide Cell and Cathodic Protection	

BRAIDED COPPER WIRE FLEXIBLE STRIPS

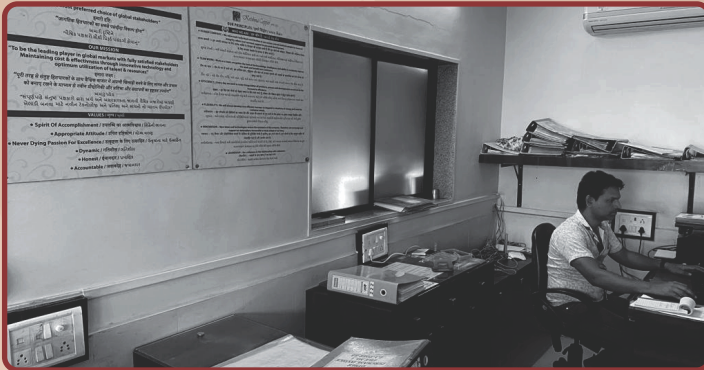
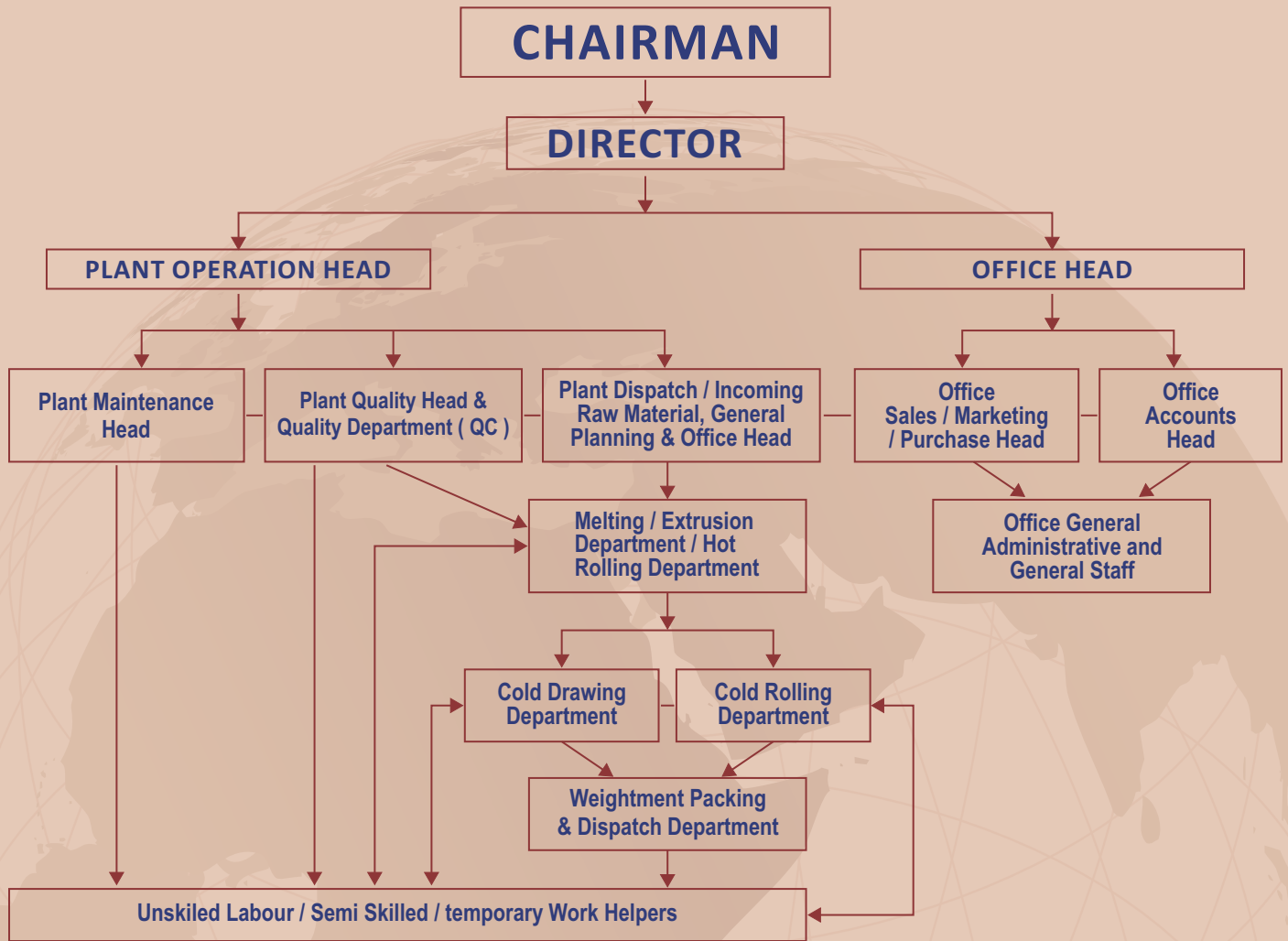
Norm. Size Width Thick in MM	Cross Sectional Area Sq.MM.	Weight per Meter in Kgs. Approx.	Current Carrying Capacity AMP. Approx.
12 x 1.5	8.40	0.080	40
12 x 3	16.80	0.170	105
19 x 1.5	12.10	0.120	63
19 x 3	22.40	0.225	145
25 x 1.5	19.60	0.200	85
25 x 3	36.50	0.350	200
25 x 6	73.00	0.725	400
32 x 1.5	36.50	0.380	120
32 x 3	42.10	0.420	240
32 x 6	81.40	0.800	400
38 x 3	53.30	0.525	800
38 x 6	80.00	0.850	500
50 x 3	70.20	0.700	400
50 x 6	109.50	1=100	800
50 x 12	280.00	2=750	1500
75 x 6	140.40	1=400	1000

BRAIDED COPPER WIRE FLEXIBLE ROPES

Diameter in MM	Sq. MM	Weight per Meter in Kgs. Approx.	AMP. Approx.
2	1.40	0.015	10
3	5.90	0.060	20
4	6.50	0.070	30
5	11.70	0.110	60
6	15.80	0.150	90
7	21.70	0.210	125
8	33.00	0.300	150
9	39.10	0.350	200
10	51.40	0.500	250
12	59.80	0.590	300
15	75.00	0.750	350
18	127.00	1.100	450



Organization Chart



CHANGE | ADAPT | GROW



KRISCOP

Krishna Copper PVT. LTD.

Mfg. Of Copper, Brass & Copper Alloys:
Wires, Strip, Foils, Rods, Flats, Sections, Profiles,
Sheets, Plates, Balls, Anodes etc.

"KRISCOP"

Recognized Brand for Copper, Brass & Copper Alloys
(Since: 2008)
An ISO 9001:2015 Certified Company

COPPER (Cu)

- Electrolytic Tough Pitch Copper (ETP) (FRHC)
 - Oxygen-free (OFHC) Copper
- Deoxidized High Phosphorus (DHP) Copper
- Deoxidized Low Phosphorus (DLP) Copper
 - Silver Bearing Copper (CuAg)
 - Iron Bearing Copper (CuFe)

BRASS (CuZn)

- Muntz Metal (Lead Free Brass) (CuZn) 56 / 44
 - Commercial Brass (CuZn) 60 / 40
- Brass (CuZn) – 63 / 37, 64 / 36, 65 / 35 & 67 / 33
- Cartridge Brass (CuZn) (Yellow Brass) 70 / 30
 - Free Machining & Free Cutting Brass (Leaded Brass) CuZnPbFe
- Red Brass Or Nordic Brass (CuZn) (85 / 15) (80 / 20)
 - Naval Brass
 - High Tensile Brass (HTB1 / HTB2 / HTB3)
 - CuZn 90 / 10 And CuZn 95 / 5 Also Known As Gilding Metal Copper
 - Silicon Brass
 - Aluminum Brass (CuAlZn)

Master Alloys & Other Ingots

- Phosphorous Copper Ingots (CuP)
Used for Degassing during copper melting
- Gun Metal / Brass / PB (CuSn)

🌐 **On Request Special Copper Based Alloys Can Be Made:**

AVAILABLE FORMS :

Flats	Rods	Wires
Plates / Sheets	Foils	Strips
Profiles/ Sections	Billets For Forging And Extrusions	Anodes & Balls
Ingots	Nuggets / Balls	Pipes / Tubes

BRONZE (CuSn)

- Commercial Bronze
- Phosphor Bronze (Pb1 / Pb2 / Pb3 / PB4)
- Aluminum Bronze (AB1, Ab2)
 - Nickel Aluminum Bronze
 - Aluminum Silicon Bronze
 - Nickel Silicon Bronze
 - Silicon Bronze
 - Manganese Bronze
 - Tin Bronze
- Leaded Bronze (Gunmetal)
 - Leaded-Tin Bronze
- Silver Bronze : CuAgCd1

OTHER COPPER ALLOYS

- Cadmium Copper (CuCd)
- Chromium Copper (CuCr)
- Copper Chromium Zirconium (CuCrZr)
- Tellurium Copper (TeCu)
- Sulphur Bearing Copper
- Copper Nickel (CuNi) 56/44, 70/30, 90/10, 95/5, CuNi1
 - Aluminium Copper (CuAl)
 - Copper Nickel Silicon (CuNiSi)
 - Copper Magnesium Silver (CuMgAg)

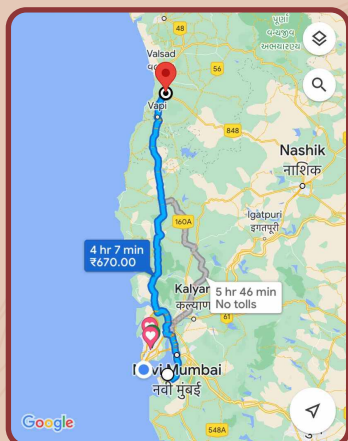
How To Reach

Krishna Copper Pvt. Ltd.

A/2 -32 and 33 G I D C .

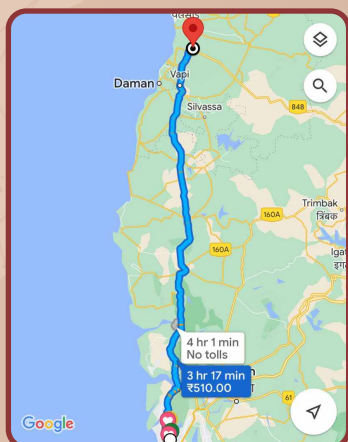
Near Fountain Hotel, Opp Advance Cooling Tower,
Killa Pardi . District Valsad. Gujarat-396125 (India)

Plant Time: 9 am to 6 pm (IST)



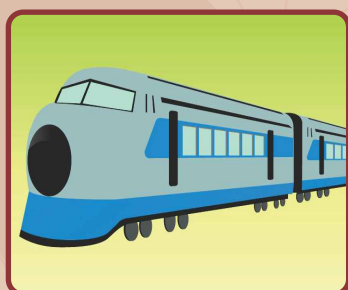
Nearest Sea Port:
Nhava Sheva (JNPT),
Mumbai - 400707, (Maharashtra, India)

Distance (By Road) 4 hr (217 km)



Nearest Air Port
Chhatrapati Shivaji Maharaj International Airport
Mumbai - 400099 (Maharashtra, India)

Distance (By Road) 3 hr (179 km)



Nearest Railway Station
Vapi (20 kms) & Valsad (10 kms)

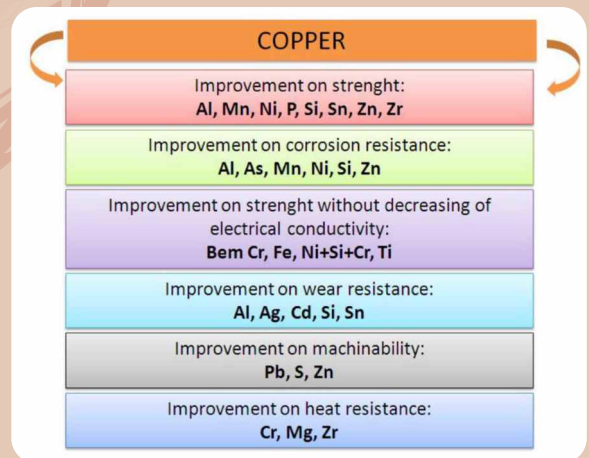
Nearest Available Transports & Courier

Avinash Cargo Pvt. Ltd.	Inland Transport
V-Trans India	OM Logistics
VRL Logistics	KABA Transport
Jaipur Golden	Fedex / DHL / DTDC / Blue Dart / Professional
TCI Freight	Lalji Mulji Transport

Exporting To:

UK Netherland Germany SLOVAKIA Sweden
 POLAND Italy MALAYSIA Spain SINGAPORE Thailand
 Zambia Australia Mexico CANADA
 Egypt Bahrain IRAN Kuwait Saudi-Arabia
 Finland Srilanka South Africa UAE
 QATAR USA OMAN
 Myanmar Bangladesh Nepal
 NORWAY Brazil NIGERIA

Copper C11000	Admiralty Metal C44300	Aluminum Bronze C63000	Copper Nickel C70600
Commercial Bronze C22000	Phosphor Bronze C51000	Silicon Aluminum Bronze C64200	Copper Nickel C71500
Red Brass C23000	Phosphor Bronze C52100	Silicon Bronze C65100	Nickel Silver C75200
Brass C24000	Aluminum Bronze C61400	Silicon Bronze C65500	Nickel Silver (Coin) C76500
Cartridge Brass C26000	Aluminum Bronze C62400	Silicon Manganese Aluminum Brass C67400	Tin Bronze C90700
Yellow Brass C27000	Aluminum Bronze C62500	Manganese Bronze C67500	Aluminum Bronze C95400



Few Customers:

TOSHIBA

Godrej

LARSEN & TOUBRO

TATA

Shapoorji Pallonji

**TITAN
COMPANY**

HAL

And many more ...

CHANGE | ADAPT | GROW
KRIS COP

Krishna Copper PVT. LTD.

Mfg. Of Copper, Brass & Copper Alloys:
Wires, Strip, Foils, Rods, Flats, Sections, Profiles,
Sheets, Plates, Balls, Anodes etc.

"KRISCOP"

Recognized Brand for Copper, Brass & Copper Alloys
(Since: 2008)
An ISO 9001:2015 Certified Company

Manufacturing Plant: A/2, 32-33, G.I.D.C. Killa Pardi, Near Hotel Fountain, Dist. Valsad, Gujarat-396125 (INDIA).

CIN NO. U27201MH2008PTC178262 / GST TIN NO. 24 AADCK2846 C 1 ZX

▪ **Email:** krishna_cu@hotmail.com ▪ **sales@groupkrishna.com** ▪ **Web Site:** www.groupkrishna.com